





Family Management



The company was born in 1976 set up by three Partners, former local workers, one of whom are still in the Company as President.



Floriano Bussetti
CEO

Graziano Bussetti
President



Storyline 1976-2017

1976	1980	1993	1999	2007	2010	2016	2017
<ul style="list-style-type: none">• YEAR OF FOUNDATION	<ul style="list-style-type: none">• FIRST PRODUCTION PAVILION	<ul style="list-style-type: none">• FROM PRODUCTION TO JOIN-STOCK COMPANY	<ul style="list-style-type: none">• ACQUISITION OF THE COMPANY METMO MOLLICONI	<ul style="list-style-type: none">• FIRST TURN-KEY PROJECT	<ul style="list-style-type: none">• EXTENSION OF BASE, NEW OFFICE BUILDING	<ul style="list-style-type: none">• ACQUISITION OF THE MAJORITY STOCK OF CCM ENGINEERING	<ul style="list-style-type: none">• ESTABLISHMENT OF COMPANY Shi.E.L.D. SERVICES WITH SAMMI MAJORITY SHAREHOLDER

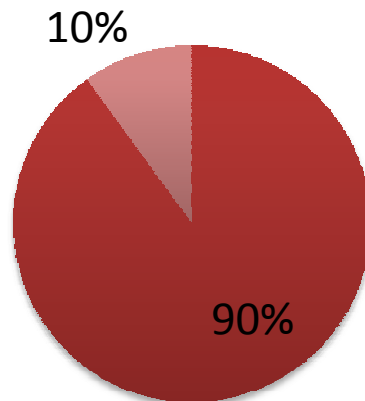


...Building for the Future



Storyline 1976-2016

1976

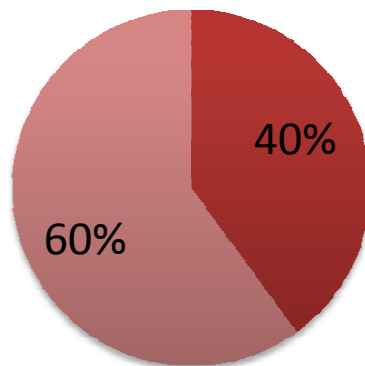


- Production - Installation - Service
- R&D - Technical Dept - Commercial Dept - Project Management

ISO 9001



1999



- Production - Installation - Service
- R&D - Technical Dept - Commercial Dept - Project Management

EN 1090

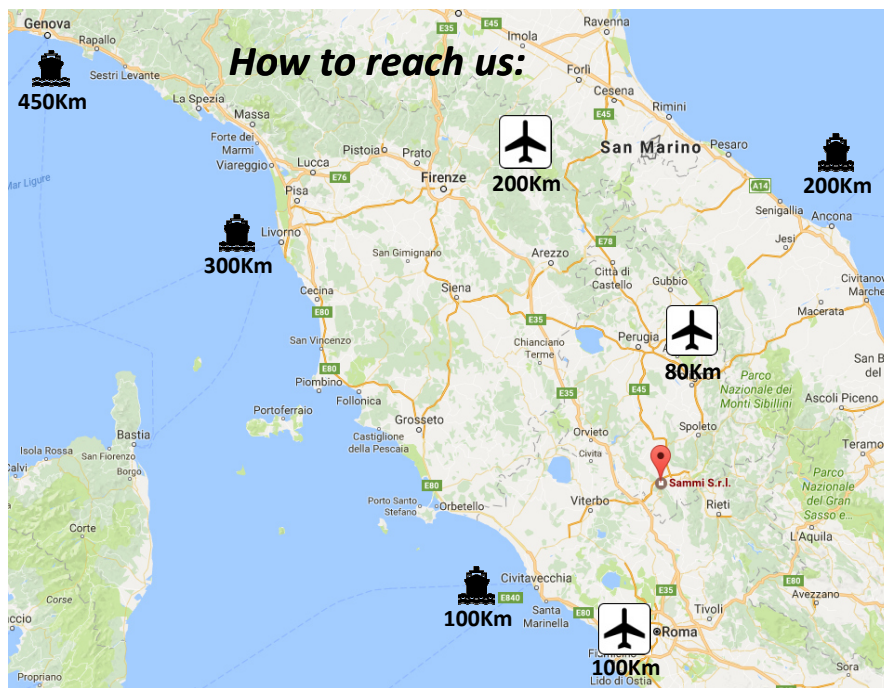


2016

Logistics

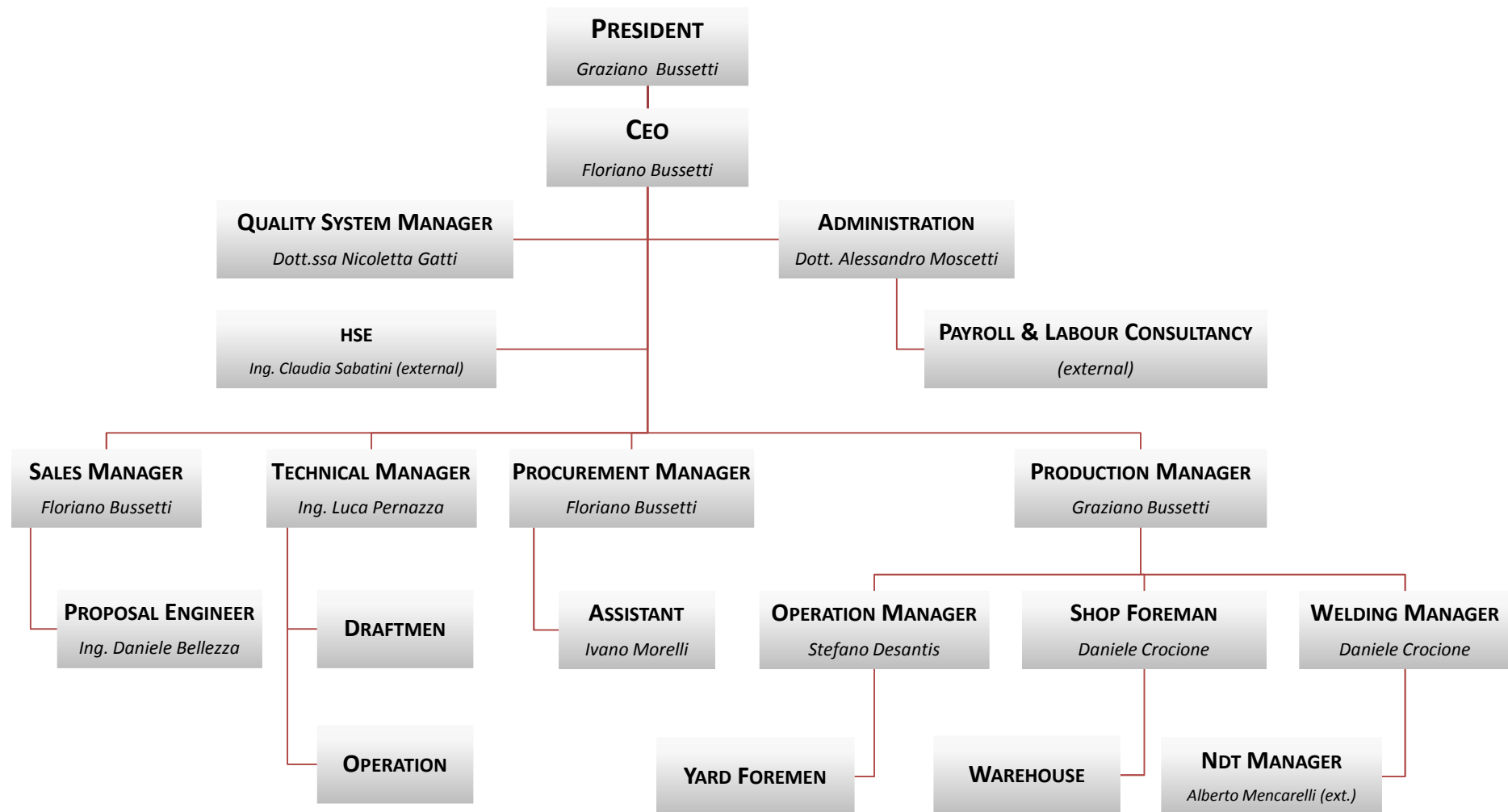


- ❖ Workshop covered surface **3.500 sqm** 
- ❖ Administration & technical offices **1.000 sqm** 
- ❖ External ground **12.000 sqm** 
- ❖ Covered warehouse **1.000 sqm** 
- ❖ Dedicated painting workshop **600 sqm** 





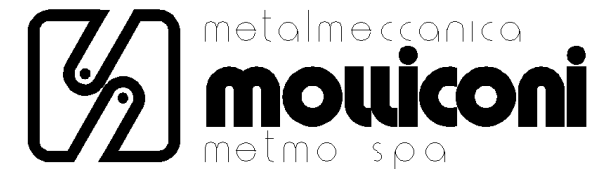
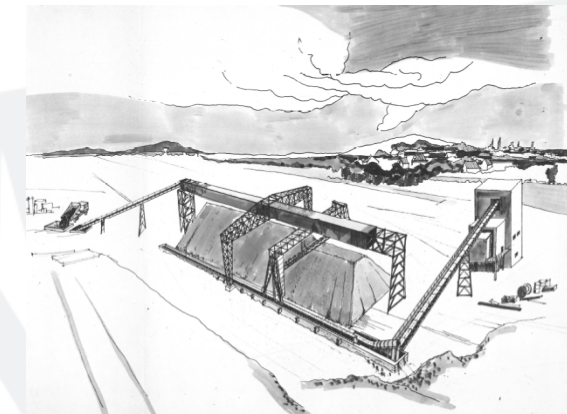
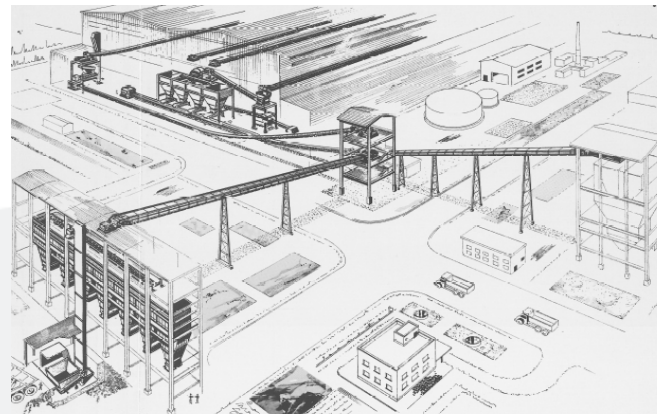
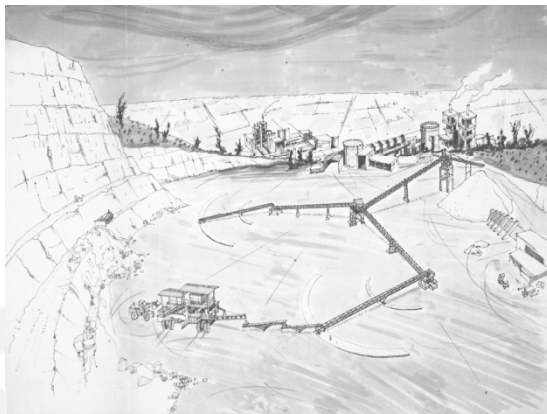
Organization Chart

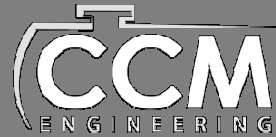




Growth by Acquisitions

A key step in the history of SAMMI dates back to 1999, when the company completed the acquisition of **MOLLICONI Metmo S.p.A.**, leading company in design and supply of complex material handling system with over 40 years of history. With this acquisition, SAMMI incorporates its design, know-how and part of its staff, becoming then a leader in the field of solid handling.

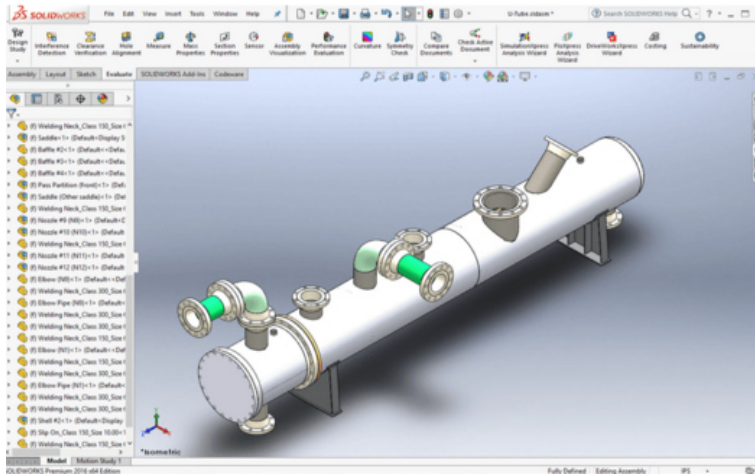




Growth by Acquisitions

At the end of 2016, SAMMI has completed the acquisition of the majority of the corporate stock of **CCM Engineering S.r.l.**, centre of excellence with more than 50 years of experience in equipment design, manufacturing and testing for the Oil& Gas, Chemical and Petrochemical industry, Urea and Ammonia plants, Power and WTP industries:

- ❖ Shell & Tube Heat Exchanger
- ❖ Pressure Vessel
- ❖ Columns
- ❖ Reactors
- ❖ Skid



...Building for the Future



Growth by Acquisitions

At the end of 2017, **Shi.E.L.D. SERVICES** is established under the majority shareholding by SAMMI. The company is specialized in all activities related to management, design and operation of the major type of Cargo Ships, Floating Transfer Stations (FTS) and Floating Cranes.

Shi.E.L.D. SERVICES offers experienced and comprehensive professional services for a wide range of business needs:

- Contract for crewing and ship management
- Supervision during ship construction
- Crewing services, selection and training
- Ship Assessment
- SMS/DOC-ISO 9000 and HSE-Q 18000 certifications
- Specific training for ship-to-ship transfer operation

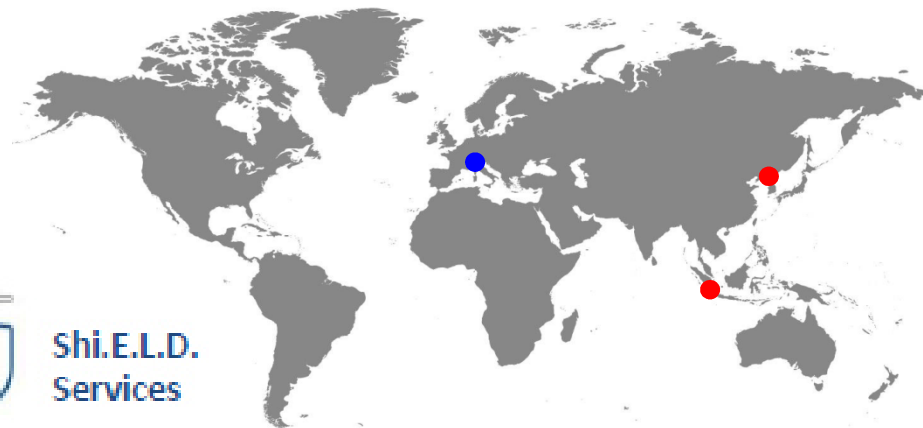


Shi.E.L.D. Services has headquarter in Milan-Italy, with branch offices in:

- Jakarta - Indonesia
- Dalian - China



Shi.E.L.D.
Services





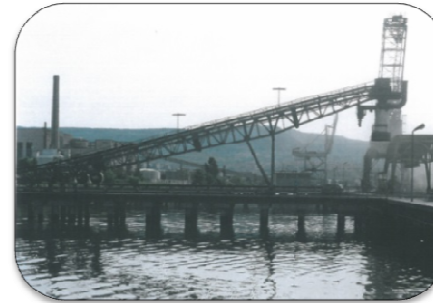
Main Application Fields



MINING/QUARRIES



OFF SHORE



PORTS &
MARITIME



REFINERY
BYPRODUCTS



AGRIBULK



STEEL &
FOUNDRIES



SPOIL REMOVAL



CEMENT

Product Range



**BELT
CONVEYORS**



**BUCKET
ELEVATORS**



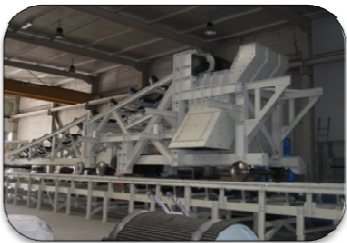
SHIP LOADER



BELT FEEDERS



HOPPERS



TRIPPER CAR



STACKER



**CHAIN
CONVEYOR**



**PIPE
CONVEYOR**



**BANDBOARD
CONVEYOR**



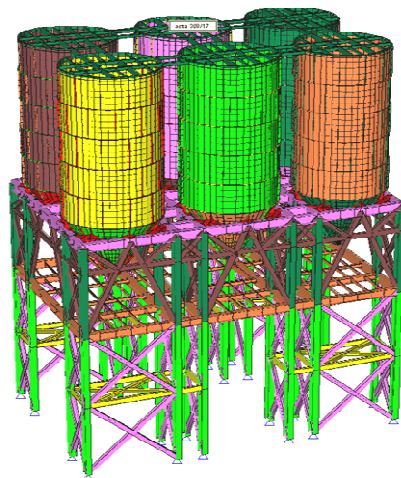
Design Approach



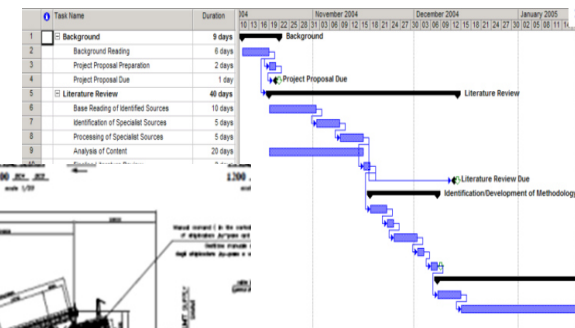
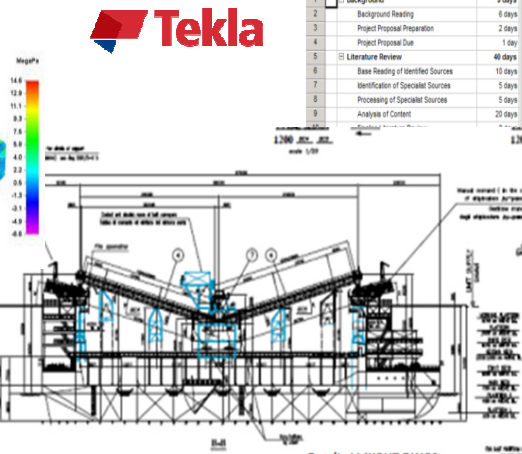
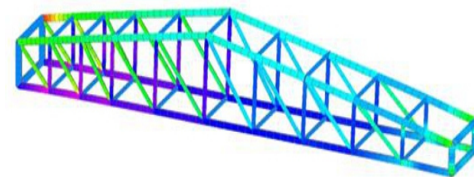
SAMMI business covers the whole lifecycle of the equipment ...



Both the design of single equipment and engineering of major contracts are carried out within SAMMI organization, thus assuring client the highest levels of satisfaction and reliability. Our skilled staff use the widest range of design tools, from traditional 2D software to the most modern and advanced three-dimensional CAD systems:



Grand am. State Windy 1
Stress - Elemental
Contour: Bees Ensh Max Core Stress
Coloration: Total Translation
Date: Wednesday, May 18, 2011 10:53 AM



...Building for the Future



Safety Approach

SAMMI is able to design according to the main International Standards:



Special attention is paid to plant or equipment suitable to operate in in a potentially explosive atmosphere. For those systems SAMMI can provide full conformity and certifications.

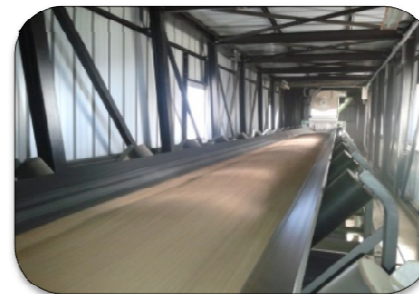
Examples of material handling system in potentially explosive atmospheres:



SULPHUR



COAL



AGRIBULK



PET COKE



Products Overview



JOB NO.	2762 & 2764 (year 2009)
CUSTOMER	CCB - CEMENTIR HOLDING (former ITALCEMENTI)
PROJECT	ALIMENTATION STOCKPILE & REMOTÉE CARRIÈRE
SCOPE OF SUPPLY	DESIGN, SUPPLY, INSTALLATION AND COMMISSIONING
NOTE	<ul style="list-style-type: none"> • CONVEYOR CAPACITY 2.500 tph WITH LIMESTONE SIZE UP TO 300mm • STOCK PILE CAPACITY 50.000 m³





Products Overview



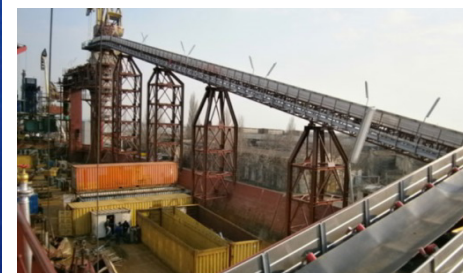
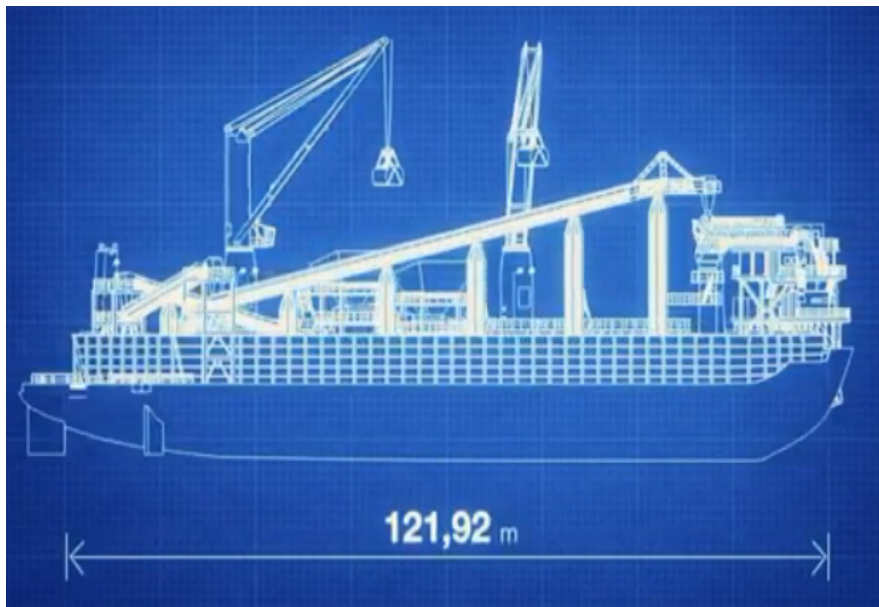
JOB NO.	2165 (Year 2002)
CUSTOMER	SOCIETA' ITALIANA PER CONDOTTE D'ACQUA SpA
PROJECT	MUCK REMOVAL CONVEYOR SYSTEM FOR NATURAL GAS PIPELINE TUNNEL
SCOPE OF SUPPLY	DESIGN, SUPPLY AND COMMISSIONING
NOTE	<ul style="list-style-type: none"> • BELT CONVEYOR LENGTH 1.200m • STOCKPILE VOLUME 750 m³ (OUTSIDE)





Products Overview

JOB NO.	2804 (Year 2010)
CUSTOMER	COECLERICI LOGISTICS SpA
PROJECT	COMPLETE MATERIAL HANDLING SYSTEM FOR FSTS "BULK KREMI 1"
SCOPE OF SUPPLY	DESIGN, FULL SUPPLY (MEC-ELE-AUT), COMMISSIONING AND SERVICE
NOTE	<ul style="list-style-type: none"> • BELT CONVEYOR CAPACITY 750 tph • SHIPLOADER SLEWING, LUFFING, SHUTTLE WITH CASCADE CHUTE

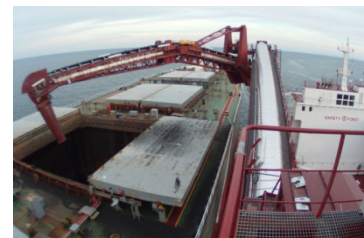




Products Overview



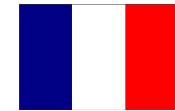
JOB NO.	2767, 2836 & 2859 (Year 2009-2011)
CUSTOMER	COECLERICI LOGISTICS SpA
PROJECT	COMPLETE MATERIAL HANDLING SYSTEM FOR FTS "BULK JAVA", "BORNEO" & "SUMATRA"
SCOPE OF SUPPLY	DESIGN, FULL SUPPLY (MEC-ELE-AUT), COMMISSIONING AND SERVICE
NOTE	<ul style="list-style-type: none"> • BELT CONVEYOR CAPACITY UP TO 2.400 tph • SHIPLOADER SLEWING, LUFFING, SHUTTLE WITH MULTI-PURPOSE LOADING SPOUT





Products Overview

JOB NO.	2870 (Year 2012)
CUSTOMER	CIMENT CALCIA - HEIDELBERG CEMENT (former ITALCEMENTI)
PROJECT	COAL AND PETCOKE MATERIAL HANDLING SYSTEM TO GRINDING MILL
SCOPE OF SUPPLY	DESIGN, SUPPLY, INSTALLATION AND COMMISSIONING
NOTE	<ul style="list-style-type: none"> • BELT CONVEYOR CAPACITY 250 tph • MATERIAL RECEIVING, CLASSIFICATION, SIZING AND TRANSPORT TO MILL





Products Overview

JOB NO.	2848 (Year 2011)
CUSTOMER	EURODOCKS Srl
PROJECT	CORNS AND FLOURS HANDLING AND WAREHOUSE STORAGE SYSTEM
SCOPE OF SUPPLY	DESIGN, SUPPLY, INSTALLATION AND COMMISSIONING
NOTE	<ul style="list-style-type: none"> • BELT CONVEYOR CAPACITY 600 tph • BELT BUCKET ELEVATOR HEIGHT 36,5 m

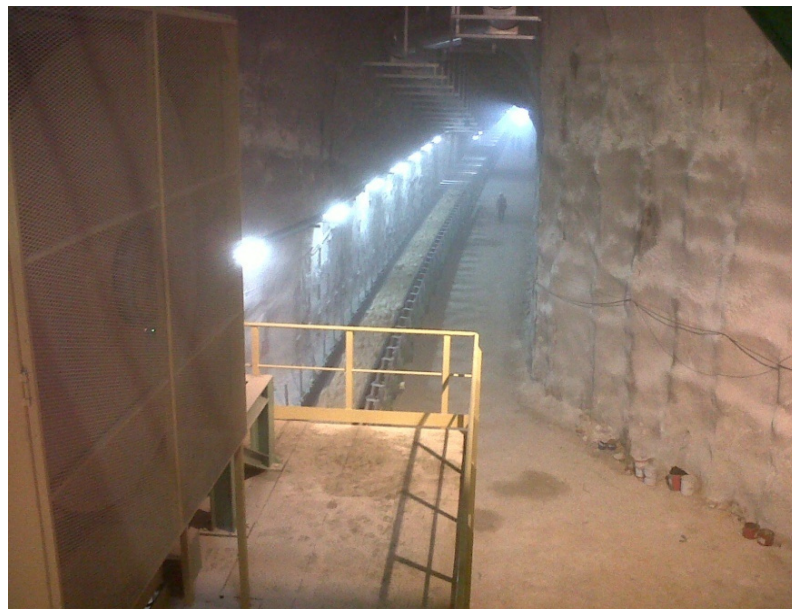




Products Overview



JOB NO.	2841 (Year 2011)
CUSTOMER	UNICALCE SpA
PROJECT	LIMESTONE UNDERGROUND CRUSHING, HANDLING AND STOCKYARD SYSTEM
SCOPE OF SUPPLY	DESIGN, SUPPLY, INSTALLATION AND COMMISSIONING
NOTE	<ul style="list-style-type: none"> • CURVED CONVEYOR CAPACITY 1200 tph, LENGTH 260 m, RADIUS 600 m • STOCKPILE CAPACITY 5.000 ton (OUTSIDE)





Products Overview



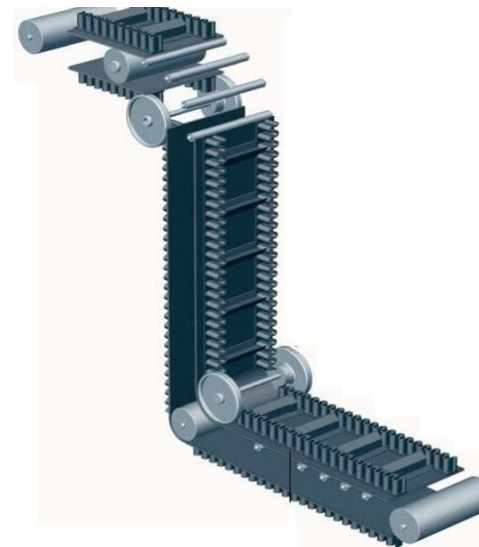
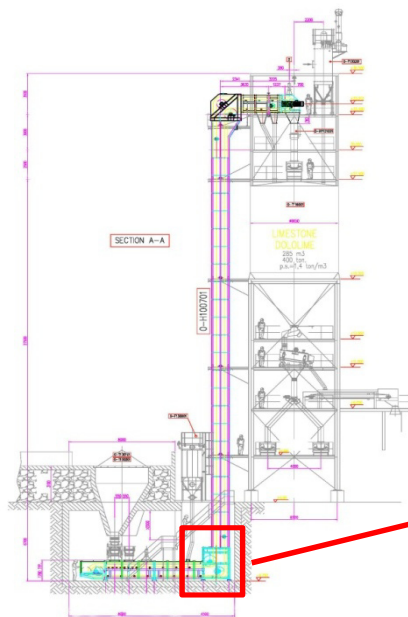
JOB NO.	3009 (Year 2014)
CUSTOMER	MARTI TECHNICS AG
PROJECT	TUNNELLING MUCK RADIAL STACKER FOR STOCKPILE AND BARGE LOADING
SCOPE OF SUPPLY	DESIGN AND SUPPLY
NOTE	<ul style="list-style-type: none"> • SLURRY MUCK CONVEYOR CAPACITY 1800 tph • ABLE TO WITHSTAND TYPHOON WIND LIMIT 250 km/h (STORM-LOCKED)





Products Overview

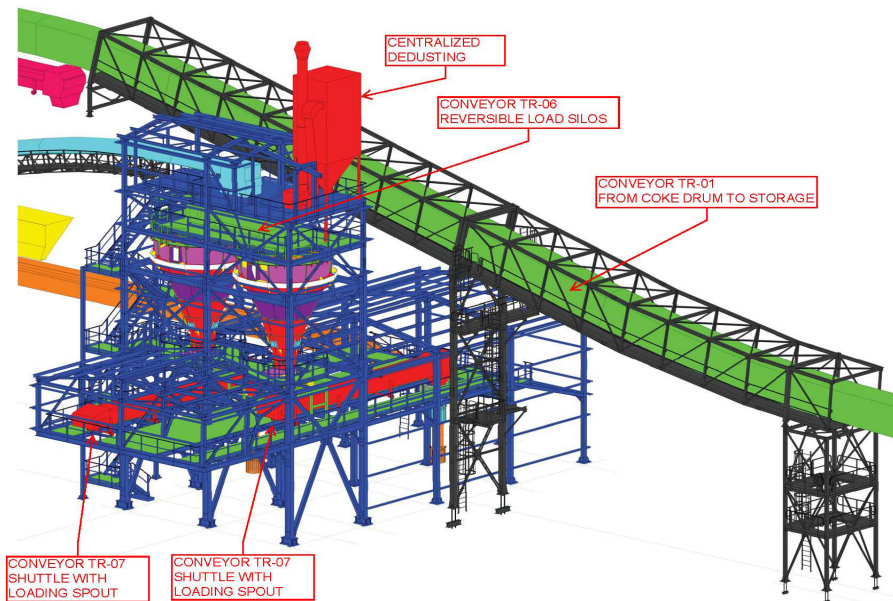
JOB NO.	3115 (Year 2016)
CUSTOMER	CIMPROGETTI Srl
PROJECT	LIMESTONE / QUICKLIME BANDEBOARD CONVEYORS FOR LIME PLANT
SCOPE OF SUPPLY	DESIGN AND SUPPLY
NOTE	<ul style="list-style-type: none"> • CONVEYOR CAPACITY UP TO 200 tph • MACHINE FEATURES BW 1000 x 55,00 m METERS TOTAL RUN (MAX)





Products Overview

JOB NO.	3101 (Year 2015)
CUSTOMER	KT-KINETICS TECHNOLOGY SpA (part of MAIRE TECNIMONT group)
PROJECT	PETCOKE HANDLING, STORAGE, RECLAIMING AND TRUCK LOADING SYSTEM
SCOPE OF SUPPLY	DESIGN, FULL SUPPLY (MEC-ELE-AUT), COMMISSIONING
NOTE	<ul style="list-style-type: none"> • CONVEYOR CAPACITY UP TO 200 tph • PLANT SCHEDULED TO BE COMMISSIONED ON 2018

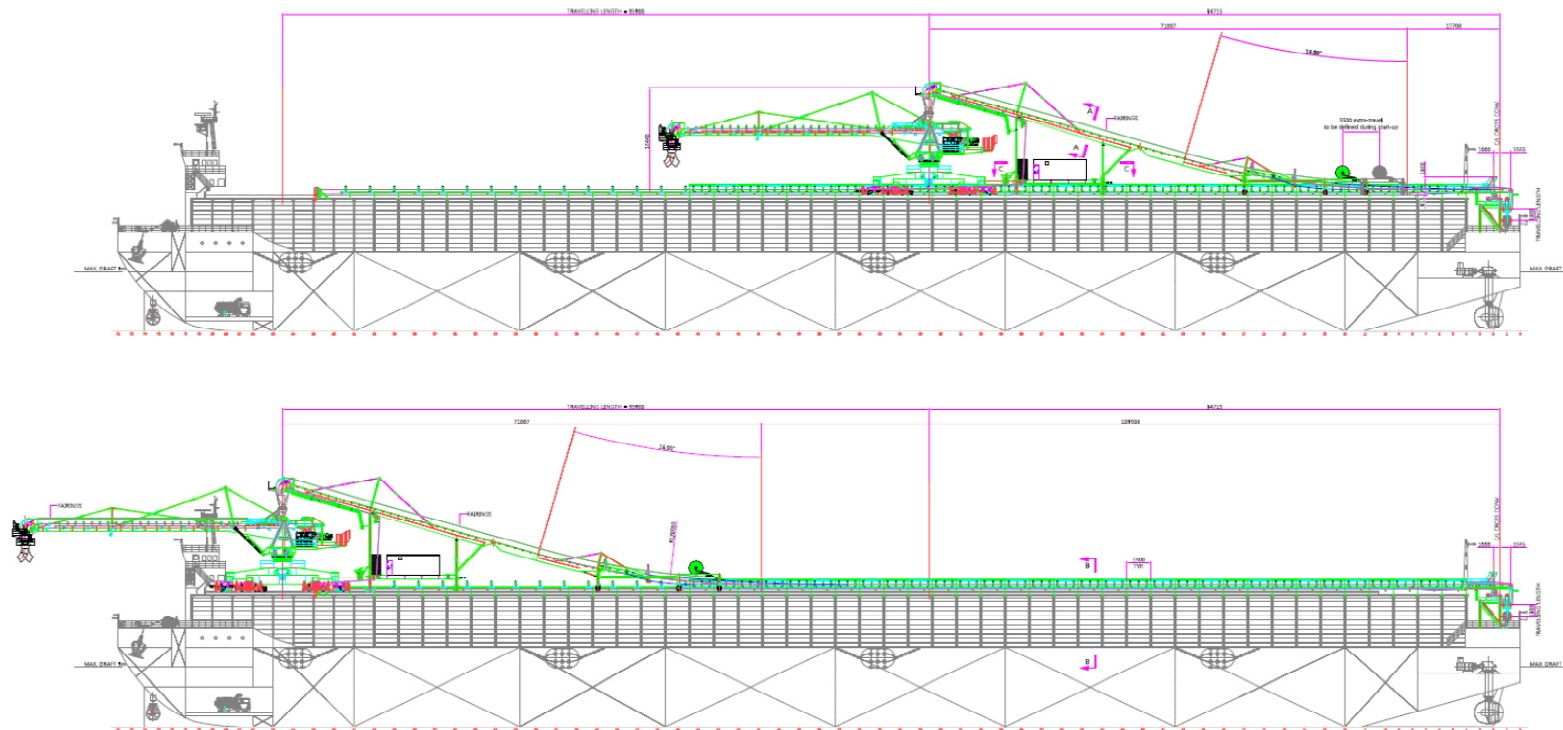




R&D: FSTS 'Bulk Sakari'

SAMMI looks to the future working to meet all bulk handling needs and requirements of its Customers. In the recent time SAMMI has worked in the feasibility and basic design of an FSTS offshore transshipment system able to load OGV up to CAPESIZE with handling rates of:

Up to 4.000 tonnes per hour (coal)

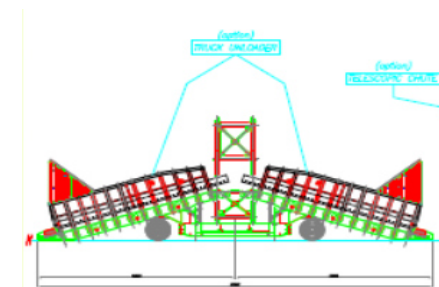
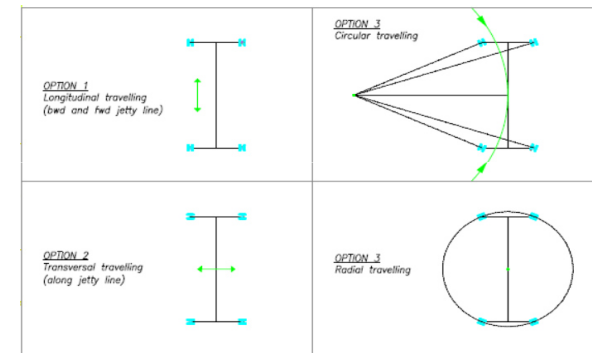
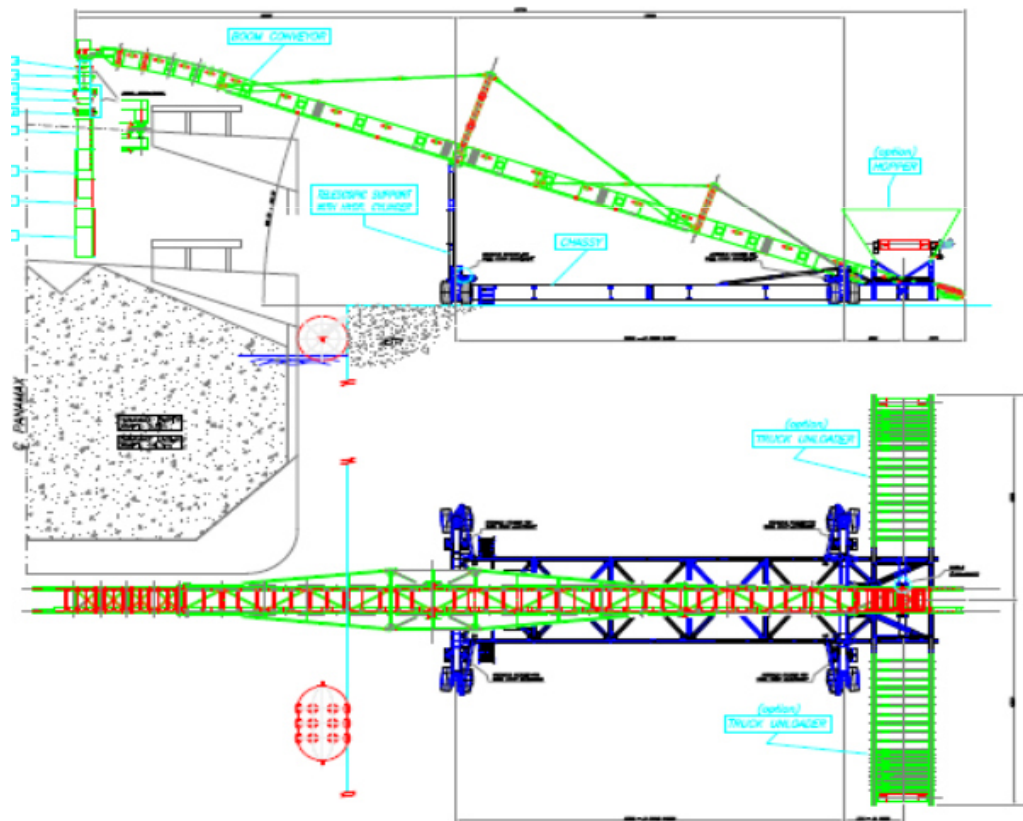




R&D: Mobile Ship Loader

Another preliminary project developed by SAMMI concerns a jetty mobile shiploader, self-propelled unit with GENSET on board, able to load OGV up to POST PANAMAX with rates of:

Up to 2.500 tonnes per hour (coal)





Future Steel



FUTURE STEEL BUILDINGS Do-It-Yourself Steel Buildings

SAMMI IS EXCLUSIVE DEALER

GALVALUME PLUS STEEL:

- Spans up to 40 meters
- From 10 to 14 degrees cooling in summer
- 7 times more resistant to rust than any steel galvanized
- 30 years warranty against perforations

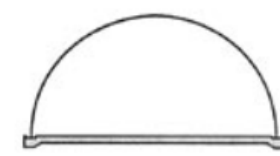
DIFFERENT SERIES:



SERIE A
da 5m a 14m



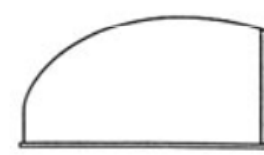
SERIE S
da 3m a 23m



SERIE Q
da 6m a 40m



SERIE X
da 6m a 18m



SERIE T
da 8m a 15m



SERIE R
da 6m a 40m

SIMPLE TO INSTALL



...Building for the Future

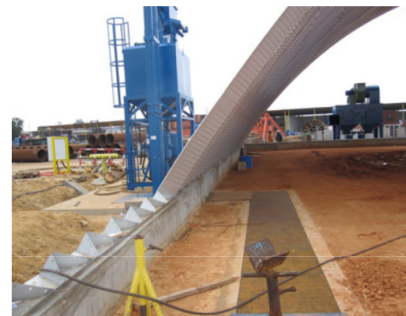


Future Steel Product Example

CLIENT / YEAR: SAIPEM NIGERIA / Year 2009
DESCRIPTION: Arch span 40 m x Length abt. 100 m (site storage temporary facility)
DELIVERY TIME: Ready for shipment in only 6 weeks from order



CAPACITY



SIMPLE FOUNDATIONS



EASY TO INSTALL

CLIENT / YEAR: SAIPEM INDONESIA / Year 2011
DESCRIPTION: Arch span 38 m x Length abt. 40 m (painting shed permanent facility)
DELIVERY TIME: Nr.2 buildings ready for shipment in only 9 weeks from order



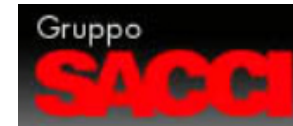
WIDE RANGE OF ACCESSORIES FOR BUILDING CUSTOMIZATION:

- ❖ Permanent or portable foundation
- ❖ Sky lighting, dome lights or standard pendant lights
- ❖ Building insulation
- ❖ Turbine vents, ventilation louvers
- ❖ Full range of doors as well as sliding doors





Main Customers



...Building for the Future



THANK YOU FOR YOUR ATTENTION !

