



Building for the Future

FUTURE STEEL BUILDINGS

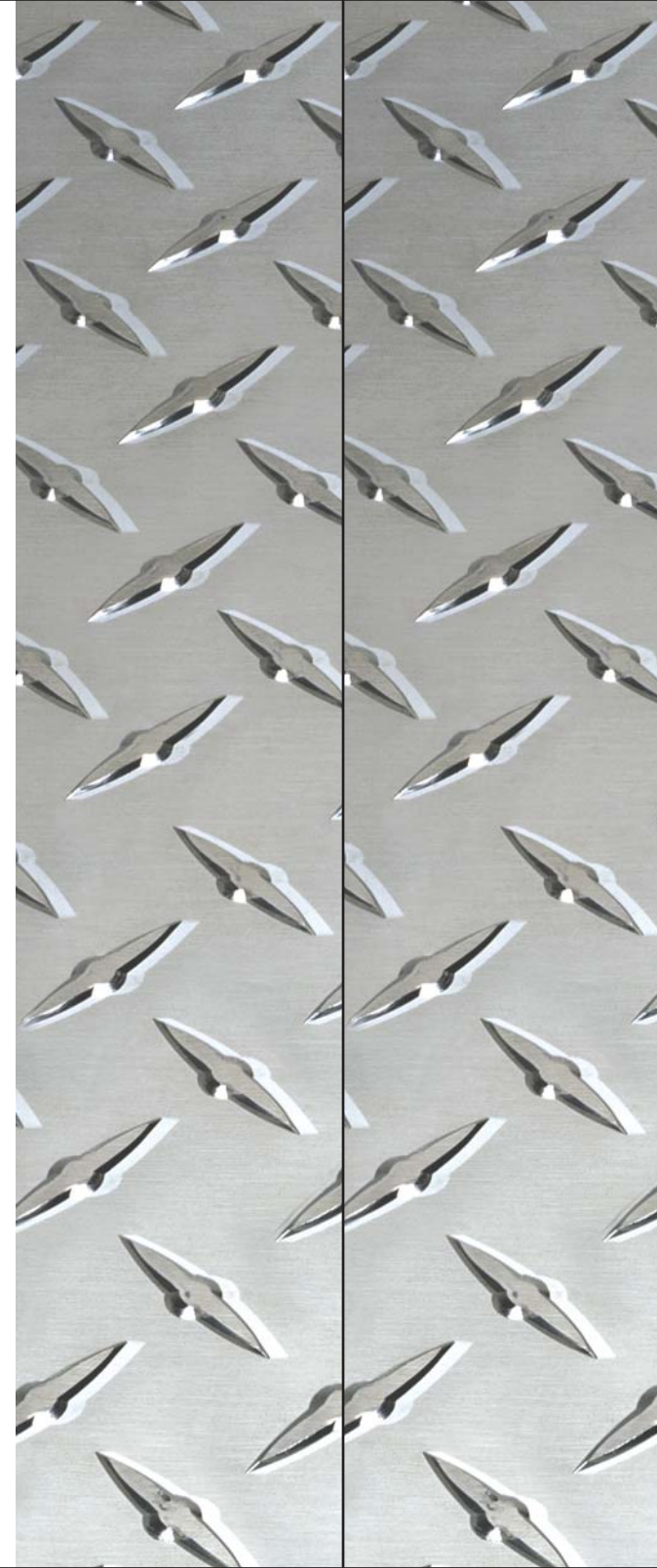
Distributed by: Future Sales Corporation

7725 Birchmount Road, Unit #10, Markham, Ontario L3R 9X3

Telephone: **(905) 477-1894** • Toll-Free: **1-800-668-5111**

Fax: **(905) 477-3661** • Toll-Free Fax: **877-474-4445**

E-mail: **info@futuresteel.com** • Website: **www.futuresteel.com**



The steel building with
the 30-year perforation
warranty

Full technical Engineering
support from start to finish

FUTURE STEEL BUILDINGS

Do-It-Yourself Steel Buildings



Building for the Future

A message from our director Marcel Aitoro

First and foremost I'd like to thank you for considering a Future Steel Building. They offer great value for the dollar because their trussless design means you have 100% usable interior space. What's more, they are based on the strongest architectural design ever conceived, the arch. So they're easy to assemble, strong, durable and can offer you years of dependable service.

But what makes Future Steel Buildings unique? Our buildings are made of the finest steel available in the world today: Galvalume Plus™ from Dofasco. What's more, our engineering staff are completely at your disposal. They'll create a customized building to suit your needs, answer your questions and offer advice right up until you put the finishing touches on your Future Steel Building.

So no matter what type of building you're looking for -- large, small or anything in between -- Future Steel can offer you the most durable, customized building you'll find anywhere. We look forward to hearing from you!

Marcel



Future Steel Buildings around the world:

We deliver thousands of our buildings around the world each year: Canada, U.S., England, Baltic Sates, France, Italy, Spain, Nigeria, Scotland, Saudi Arabia, Turkey, Egypt, Panama, Falkland Islands, Belize, Puerto Rico, Peru, New Zealand, Lebanon and Latvia. Plus, our buildings are the first choice for military and humanitarian projects all over the world.



What our customers have to say

“We are pleased to tell you that every aspect of our new two level “museum” has gone better than your representative and brochure advertised, including on time delivery, easy-to-follow instructions and ample supplies to erect the complete building hassle free.”

*Gerald & Mona Gobel
Richmond, British Columbia*

“The straight wall design and your price were what enticed us, it was up to several thousand dollars less than some companies. The building arrived when promised. The instructions were extremely easy to follow. The service was excellent, any problems we had we just phoned your 1-800 number and our questions were answered promptly.”

*Gary Van Brabant
Morinville, Alberta*

“The professionalism and courtesy I received from Future Steel Corporation was greatly appreciated.”

*John Cameron
Gansvoort, New York*

“From start to finish, Future Steel had the most helpful sales and technical support team, for a customer wanting to avoid hiring an expensive contractor.”

*Brad & Susan Gydesen
Croghan, New York*

“We have always felt that when dealing with Future Steel Buildings, we were dealing with true building professionals who understood contractor's requirements. They're just easy to deal with, that's the long and short of it.”

*Erwin Busschaert
Professional Services Inc.
Yarker, Ontario*

“Now I have a barn that is the envy of my neighbours!”

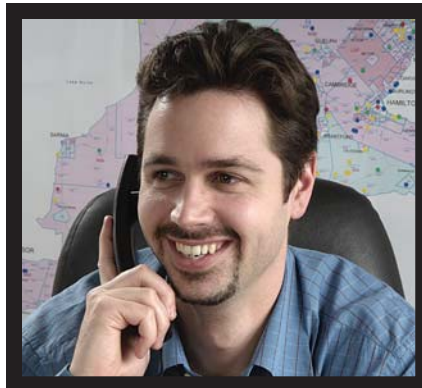
*Wendell Bushong
Demidji, Minnesota*



Factory Direct Savings & Expertise

Not only does Future Steel offer you the savings of factory direct purchasing, it also means you deal directly with the people who have designed and manufactured your building.

Made at our state-of-the-art Canadian factory in Brampton, Ontario every Future Steel Building is made using the best quality steel in the world today: Galvalume Plus™ from Dofasco.



Engineers standing by to help

One of the truly unique things that Future Steel can offer is giving you direct access to our engineering team. Made up of some of the industry's most sought-after engineers, you couldn't have access to a more knowledgeable group of professionals. You can discuss your requirements in advance, work on a custom building design, listen to their professional advice, get fast answers to your questions and even contact them during assembly for one-on-one assistance.

Call today to find out more: 1-800-668-5111 or visit us at: www.futuresteel.com



Exclusive Future Steel 30-year perforation warrantee

All Future Steel Buildings are warrantied against perforation for a full 30 years from the date of purchase.



Galvalume Plus™

Steel Construction for years of durable service

Galvalume Plus Steel is a steel sheet product with a highly corrosion-resistant steel, aluminum-zinc alloy hot dipped coating. A clear organic acrylic resin coating is then applied and thermally cured. All combined, it provides you with a building that is superior in strength, corrosion resistant and features an attractive, appearance:

- Fire resistant
- 10 to 14 degrees cooler in the summer than other buildings.
- 7 times more rust resistant than galvanized steel
- 3 to 6 times thicker than traditional steel buildings
- 30-year perforation guarantee
- Excellent heat reflectivity

Contents

A Style	4 & 5
X Style	6 & 7
S Style	8 & 9
Q Style	10 & 11
T Style	12 & 13
R Style	12 & 13
Customize Your Building	14 & 15
Do-It-Yourself Assembly	16 & 17
Factory Direct Savings & Expertise	18
What our customers have to say	19

A Style Building



The A Style Future Steel Building offers you a conventional appearance with its straight-sides and peaked roof. While it lends itself to a variety of uses, it was developed especially for use as a backyard garage, workshop or all-purpose shelter. It is available in standard sizes that range, in widths from 16' (4.87m) to 40' (12.46m) wide, with varying centre heights and unlimited lengths.

Typical Uses include:

- Backyard Garages
- Car Garages
- Woodworking Shops
- Mechanic Shops
- All-Purpose Utility Shelters
- Recreational Vehicle Storage
- Boat Storage
- Camper Storage



Call today to find out more: 1-800-668-5111 or visit us at: www.futuresteel.com



Customize your end walls

Depending on your needs, you can construct your end-walls using steel or wood construction, framing in windows and doors as necessary. Then using conventional insulation methods you can quickly and easily insulate your walls for heating and cooling efficiency. Finally, you can complete your end-walls with vinyl or aluminum siding or any finished look to suit your taste.



4 step
easy
Assembly

Easy Do-It-Yourself Assembly

Most Future Steel Building owners assemble and raise their own buildings, using simple tools and our easy-to-follow instruction manuals:



Call today to find out more: 1-800-668-5111 or visit us at: www.futuresteel.com

1. Pour the footings

Pour a floating concrete perimeter footing onto a level site.



2. Assemble the arches

Using our basic 2' (60.96cm) by 10' (3.28m) building panels, all arches are assembled easily on the ground and have a 9" (22.86cm) overlap to ensure a watertight seal.



3. Raise the arches

For most buildings, raising the arches is easily completed using only ropes and scaffolding.



4. Finishing

The endwalls are inserted, the doors assembled and hung, all bolts tightened and grouting is applied at the footing.



X Style Building



The X Style Future Steel Building is also more conventional in appearance but offers slightly more interior space with its sloped walls and peaked roof.

Ideally suited for any use from backyard garage to industrial warehouse, the X Style is available in standard sizes that range from 20' (6.09m) to 60' (18.28m) wide with varying centre heights.

Typical Uses include:

- Retail Showrooms
- Boat Shops
- Automobile Dealerships
- Auto Mechanic Garages
- Trade Shops
- Industrial Shops
- Convenience Stores
- Grocery Stores
- Studios



Call today to find out more: 1-800-668-5111 or visit us at: www.futuresteel.com



End Wall and Front Wall Finished Looks

The finished look of your Future Steel Building is limited only by your imagination. Match your walls to your existing architecture, add windows, shutters, doors, skylights and any other exterior decorative or functional feature you wish!

Skylights

Skylights offer you an economical way to light up the interior of your Future Steel Building without electricity! Panels are manufactured from heavy-duty fibreglass in a variety of colours and come in lengths of up to 10' (3.04m) in a standard 2' (60cm) width.

Insulation

All Future Steel Buildings are compatible with conventional insulation methods. We recommend an R13 Insulation which is cost and heat efficient, fire and flame resistant. All Future Steel Buildings come prepared for quick and easy installation of insulation.



Add-on to existing structures

All Future Steel Buildings can be easily added on to an existing structure of any kind and extensions are also available for existing Future Steel Buildings.



Partition

Partition your building using our steel inner walls or your own dry-wall to create separate storage areas, offices, warehouse and even various living areas.



12" Turbine Ventilators

Turbine vents and adapters are installed easily to allow for maximum aeration and can also be used as auger inlets.



Options

Customize your building

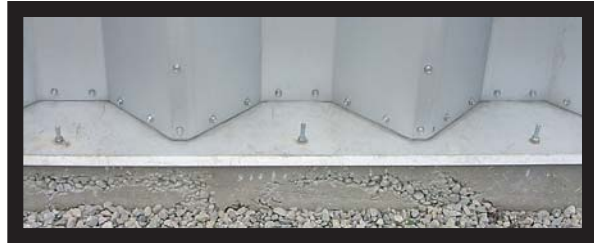
Whether you need a small backyard shed, airplane hangar, livestock housing, heavy equipment storage facility or even a residence, Future Steel has the building that will suit your needs perfectly. Start by choosing from our 5 basic building styles and then review your specific needs with our engineering staff. We'll offer you a customized design at no extra cost and build it to your exact size and specifications.

Accessories and Options



Permanent Foundation

The Concrete Base Foundation is a floating foundation running around the perimeter of the structure. It is 20" (50.8cm) wide and 18" (45.72cm) deep. This type of concrete foundation has a "U-Groove" formation into which the assembled building is grouted.



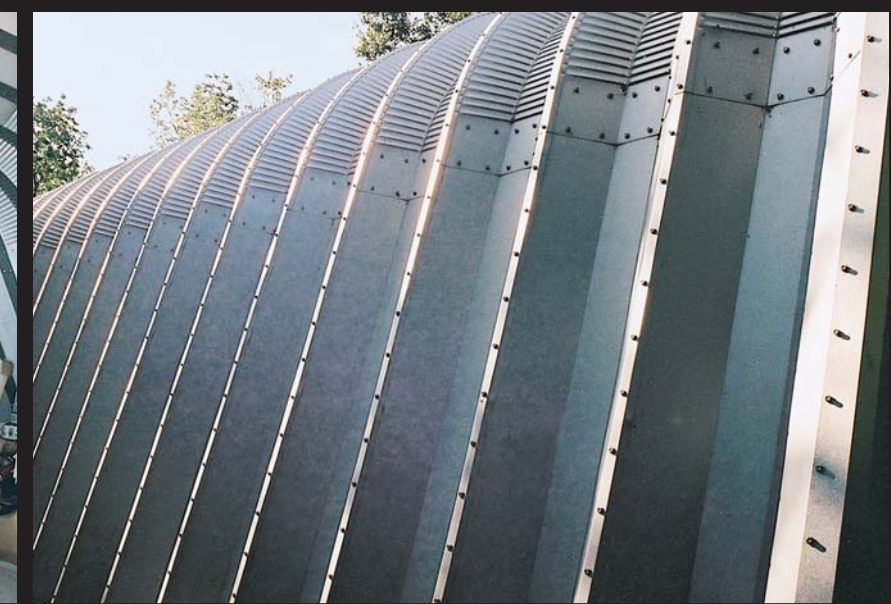
Portable Foundation

The Industrial Base Plate is made from heavy-duty, 14 gauge steel. It is affixed to a solid floating foundation, 10" (25.4cm) wide by 16" (40.64cm) deep. Staggered anchor bolts are used to connect the base plate to the concrete perimeter. The steel building is then assembled and bolted directly onto the Industrial Base Plate.



Doors

Depending on your specific needs, Future Steel offers a full range of customized, heavy-duty and easy to install doors in standard service, sliding and overhead styles.



Call today to find out more: 1-800-668-5111 or visit us at: www.futuresteel.com

S Style Building



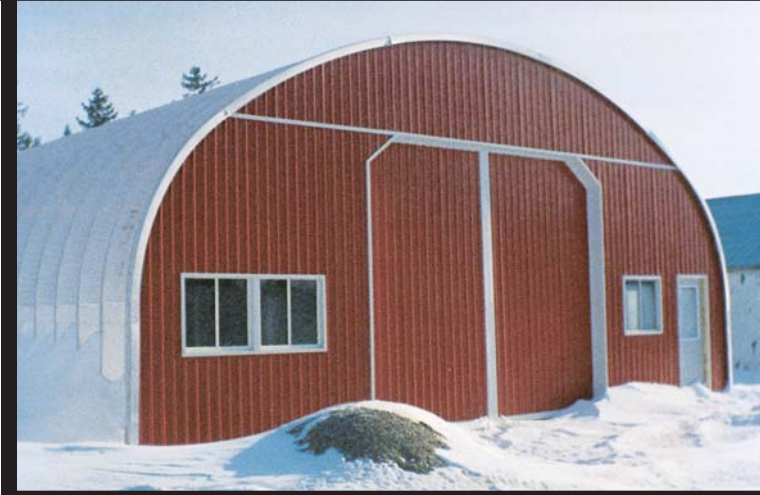
The S Style Future Steel Building features straight side-walls and a clear span arch roof. The side-wall clearance is increased with the use of the straight wall panel design, allowing for large pieces of equipment to be stored against the walls. The S Style is available in sizes varying from 10' (3.04m) to 75' (22.86 m) wide, with varying centre heights.



Typical Uses include:

- Residences
- Cottages
- Lakeside Dwellings
- Additions
- Garages
- Warehouses
- Manufacturing & Storage
- Studios
- Conference Halls

Call today to find out more: 1-800-668-5111 or visit us at: www.futuresteel.com



Style
Building

Roofing
Systems

T Style Building

This open-sided quonset is a single radius, partial-arch structure, clear-span with structural frame supports on the open side. Standard sizes range from 25' (7.62m) wide to 50' (15.24m) wide with various open side clearances of 8' (2.62m) high to 30' (9.62m) high. Varying bay spacings are available.

Uses include:

- Livestock Housing
- Shelter for Large Tractors,
- Service Facilities for Trucks and Other Vehicles
- Outdoor Farm Markets

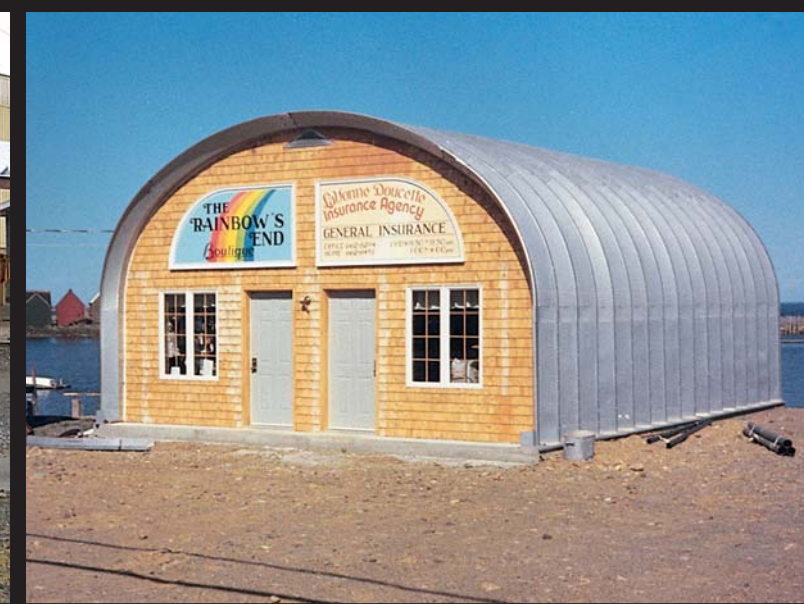


R Style - Roofing Systems

A single radius, clear-span, low profile arch structure, designed to act as a roof system which uses a conventional wall design as a side-wall support. Standard sizes range from 10' (3.65m) wide to 130' (39.62m) wide, with heights ranging from 8' (2.43m) to 32' (9.75m).

Uses include:

- Pool Covers
- Hockey Rinks
- Recycling Plants
- Replacement Roofs



Call today to find out more: 1-800-668-5111 or visit us at: www.futuresteel.com



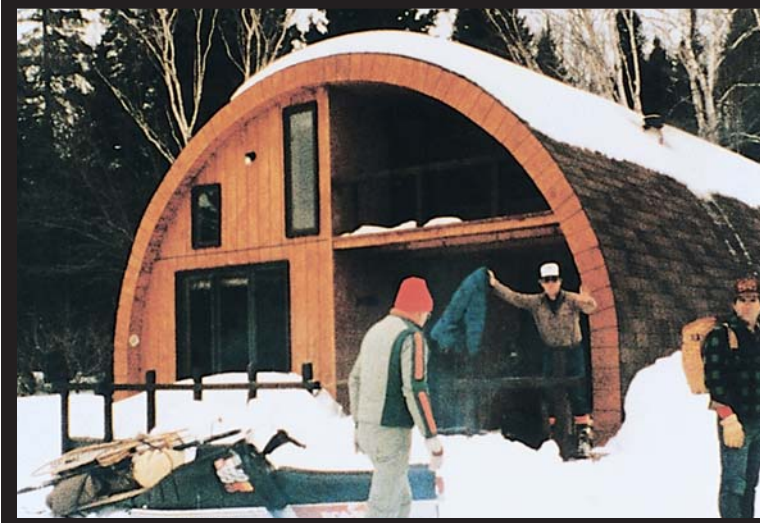
Q Style Building

The Q Style Future Steel Building features the traditional quonset style profile. This single radius, clear-span arch structure is available in sizes ranging from 16' (4.87m) wide to 125' (38.10m) wide, with height limited to half the span or less.



Typical Uses include:

- Riding Arenas
- Indoor Swimming Pools
- Pool Halls
- Skating & Hockey Rinks
- Soccer Arenas
- Fitness Centres
- Airplane Hangars
- Grain and Crop Storage
- Equipment Repair Shop



Call today to find out more: 1-800-668-5111 or visit us at: www.futuresteel.com