

Shi.E.L.D. SERVICES

**Global Solutions for
Ships
Energy
Logistics
Design**

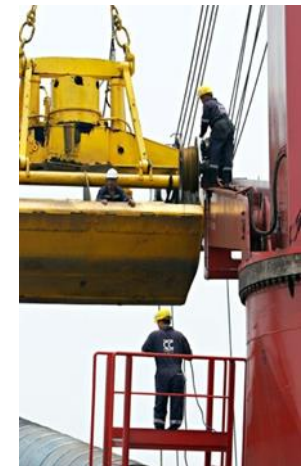
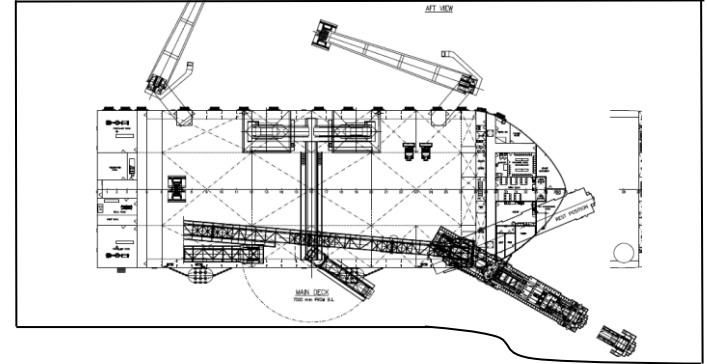
Shi for Ships

Shi.E.L.D. Services is specialized in all activities related to management, design and operation of the major type of ships (Bulk Carrier, Chemical Tanker, Supply Vessel, Anchor Handling Tug, Gas Carrier), Floating Transfer Station (FTS) and Floating Cranes.

- SHIPMAN contract for crewing and management
- Supervision during construction
- Crewing selection and training
- Ship Assessment
- BIMCO for T/C and BB contract
- P&I – H&M inspection and assessment
- SMS/DOC - ISO 9000 and HSE-Q 18000 certifications
- Specific training for ship to ship transfer operations

Shi for Ships

- **In House design** - A team of dedicated naval and mechanical engineers give full support to clients to understand their requirements and to develop tailor made solutions
- **Supervision during construction** - The logistics division's superintendents and engineers monitor step by step all the building process at shipyard to grant the highest quality to the client
- **Technical & Fleet Management** - Periodical maintenance of the Units, dry docks and surveys; International Safety management and Quality management and on board operations' monitoring
- **Procurement** - A dedicated team for crew management, spares purchasing and delivery
- **Operations** - A dedicated in house team monitor the daily management of the Units operations while onsite crew & Terminal Manager supervise the Unit operations



Shi for Ships



© Norskan
MarineTraffic.com



E for Energy

ShiELD is able to design and manage port infrastructure in connection with his partners specialized in cargo handling.



E for Energy



L for Logistics

- ShiELD is composed by specialised people with more than 20 years of experience in the maritime business, specialised in the Off Shore tailor made logistics design, building and operating vessels all over the world.
- ShiELD can provide tailor made solutions for all logistics chain in the Maritime transport services



Photo by courtesy of Coeclerici



L for Logistics

Transshipment of Coal in Indonesia



Photo by courtesy of Coeclerici



L for Logistics

Transshipment of Coal in Indonesia



Photo by courtesy of Coeclerici



L for Logistics

Transshipment of Coal in Mozambique 25 nm off shore



Photo by courtesy of Coeclerici



L for Logistics

Transshipment of Iron Ore in Italy



Photo by courtesy of Coeclerici



L for Logistics

Transshipment of Iron Ore in India



Photo by courtesy of Coeclerici



L for Logistics

Transshipment of Sulphur in the Black Sea



Photo by courtesy of Coeclerici



D for Design

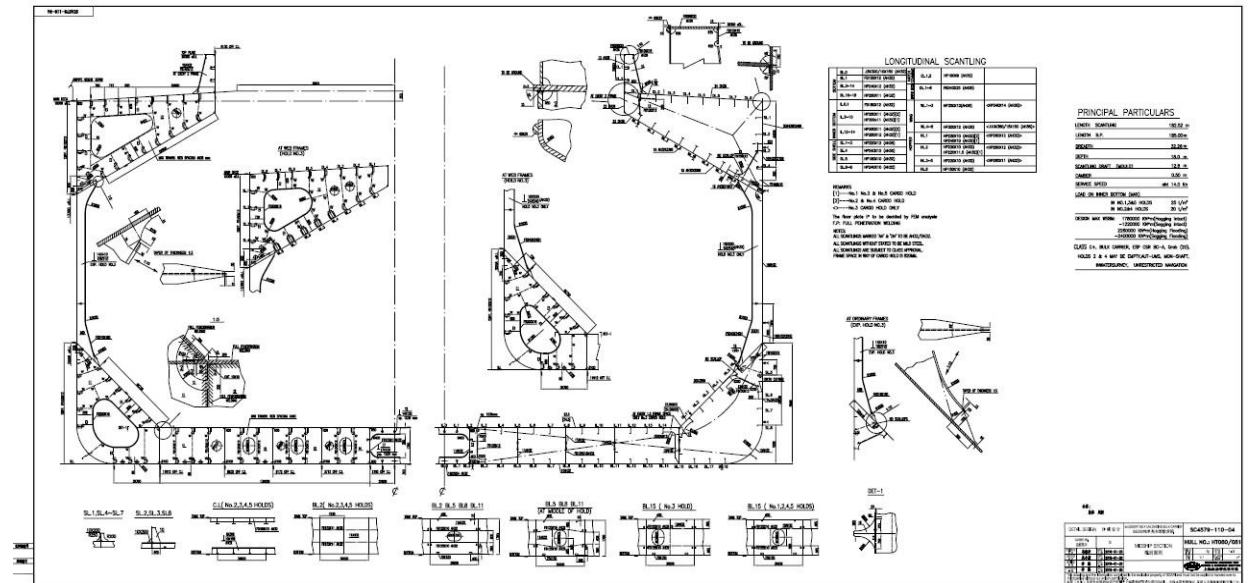
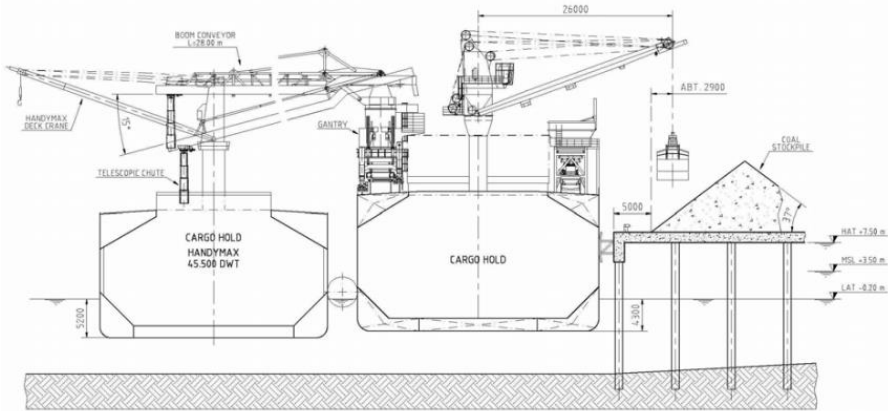
ShiELD main activities is to design tailor made On and Off Shore logistic activities.

- Port and infrastucture
- Best logistic solution
- Cycle calculation
- Optimization of capex
- Optimization of opex

ShiELD is able to design all kind of ships

- Main design of vessel
- Main design of ship systems and cargo handling
- Assistance in selecting shipyards and suppliers

D for Design



Shi.E.L.D. Services

Crew Management



Shi.E.L.D. Services

Cargo Handling System



Main Partners

- Coeclerici SpA - Italy
- Rosetti Marino Shipyard - Italy
- RINA/Lloyd Register/ABS/GL/BKI
- Sammi Conveyor System - Italy
- Bedeschi Conveyor System - Italy
- Damen Shipyard - Netherlands
- Mac Gregor Conveyor System - Sweden
- Tongshun Shipyard - China
- ProgettoNave designing company - Italy
- Liebherr Cranes – Austria
- TTS crane - Germany
- PT PAL (Persero) Shipyard – Indonesia
- Lelangon – workshop - Indonesia
- Pax Ocean Shipyard – Indonesia
- Oshima Shipyard - Japan



Offices

- Milan - Italy
- Jakarta - Indonesia
- Dalian - China



Contacts

Shi.E.L.D. Services srl

Viale Ferdinando di Savoia, 2
20124 Milano - ITALY

For commercial matters: info@shieldservices.it

For technical matters: fleetmng@shieldservices.it

General Manager

Mr. Corrado Cuccurullo

Mob. Ph. +39 335 6689995

Email: ccuccurullo@shieldservices.it

